



**TOYOTA**

2021 Land Cruiser



2021 LAND CRUISER

# Elevate your status, figuratively and literally.

The ultimate expression of luxury and capability, the 2021 Toyota Land Cruiser is ready to make an impression wherever you go. A powerful 381-hp V8 and legendary off-road<sup>1</sup> prowess help you tackle some of the toughest terrain, while inside, spacious heated and ventilated perforated leather-trimmed front seats let you enjoy it all in comfort.



See numbered footnotes in Disclosures section.

INTERIOR

# A sophisticated explorer.

No matter the terrain. No matter the distance. No matter the obstacle. For over 60 years, Land Cruiser has conquered the globe, leaving behind a reputation of toughness and reliability. It's time to see what icons are truly made of.



Land Cruiser shown in Blizzard Pearl.<sup>2</sup> Below left: Land Cruiser shown in Blizzard Pearl.<sup>2</sup> Below center: Heritage Edition shown in Midnight Black Metallic.<sup>2</sup> Below right: Heritage Edition shown in Blizzard Pearl.<sup>2</sup>



## Impressive design

True to its off-road heritage, Land Cruiser is built on a rugged 10-member high-tensile steel ladder frame for reduced flex and enhanced durability. So whether you're traversing uncharted terrain or enjoying a night on the town, you can rest assured that you'll always arrive in style.

## LED lighting

Land Cruiser features powerful lighting up front to help light your way. The headlights utilize LED elements for both the low and high beams, giving you bright, efficient light when you need it. And when the weather turns sour, integrated LED fog lights help you see and be seen.

## Powerful grille

When you're a legend, it's okay to show off a little. Up front, the chrome grille blends into the LED headlights for added sophistication. A sculpted hood hints at the powerful V8 underneath, and its front fenders show that this SUV is ready to flex its muscle.

Off-roading is inherently dangerous. Abusive use may result in bodily harm or vehicle damage. Wear seatbelts at all times and do not allow passengers in cargo area.

# The legend lives on.

Paying homage to the legends that came before is the Land Cruiser Heritage Edition. As the latest extension of the iconic badge, it celebrates where it's been while continuing the tradition of extreme capability and luxurious comfort.



## Functional styling

Outfitted to overcome more of what the trails throw at you. Removing the running boards and lower chrome body moldings found on standard Land Cruiser not only gives Heritage Edition a clean look, but also helps it avoid damage when crawling over obstacles.

## Darkened chrome-finished surrounds

Heritage Edition cleans up nicely. Darkened chrome-finished surrounds and side mirrors with darkened chrome-finished details give Heritage Edition a polished look up close. And after the sun goes down, fog lights with dark chrome-finished surrounds and darkened headlight housings add to its sophisticated stare.

## Iconic badging

Land Cruiser Heritage Edition's signature badging takes inspiration from the original FJ40 and is used to pay homage to the decades of legends that came before it.



## 18-in. bronze-colored BBS® alloy wheels

Tough and lightweight, bronze-colored BBS® 18-in. forged-aluminum alloy wheels add to Heritage Edition's unmistakable presence.

Off-roading is inherently dangerous. Abusive use may result in bodily harm or vehicle damage. Wear seatbelts at all times and do not allow passengers in cargo area.

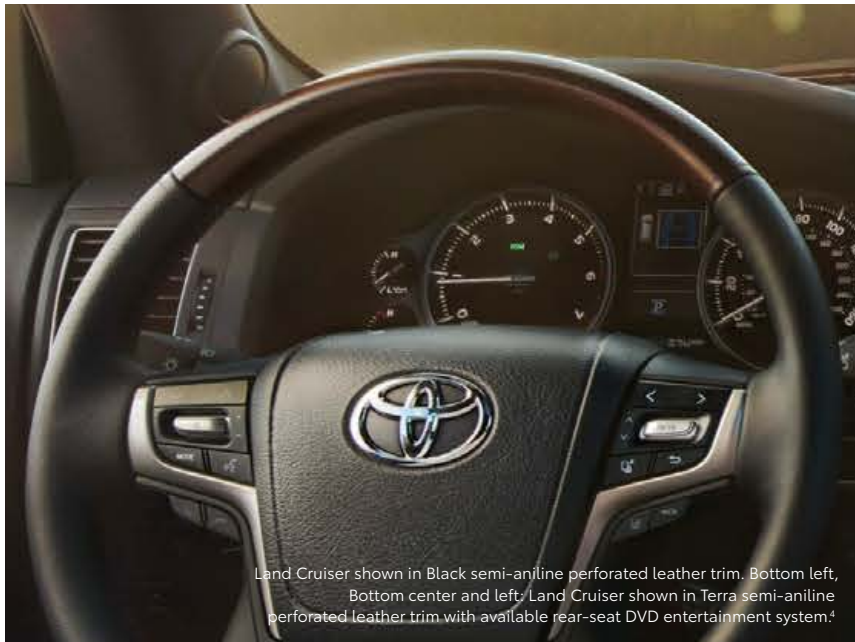
## Bronze-colored contrast stitching

See and feel the dedication to every detail. The bronze theme continues inside and highlights Heritage Edition's uniqueness with bronze-colored contrast stitching used on the steering wheel, door trim, center stack, console and leather-trimmed seats.

## Purposeful interior

Inside, luxury and capability effortlessly blend together. Heritage Edition seats up to eight and reveals an interior filled with purpose. From materials that raise its premium feel to ample cargo space that lets you bring more of what you need, get ready to take every trip to the next level.





Land Cruiser shown in Black semi-aniline perforated leather trim. Bottom left, Bottom center and left; Land Cruiser shown in Terra semi-aniline perforated leather trim with available rear-seat DVD entertainment system.<sup>4</sup>

## INTERIOR

# An upgrade in presence.

There are family SUVs. And then there are SUVs that are versatile enough to accommodate even the extended family. Second- and available third-row seats allow passengers to ride in the lap of luxury. If more cargo room is in demand, fold down both rows to reveal over 80 cu. ft. of cargo space.<sup>5</sup>

### Leather-trimmed, heated steering wheel

Land Cruiser's leather-trimmed steering wheel is not only heated, but also features controls for the audio system, Multi-Information Display (MID) and Bluetooth<sup>®6</sup> wireless technology.

### Ventilated and heated seats

Observe your surroundings from the comfort of leather-trimmed, multi-stage heated and ventilated front seats. The second-row seats also feature multi-stage heating, so your passengers won't be left in the cold.

### Seating for up to eight

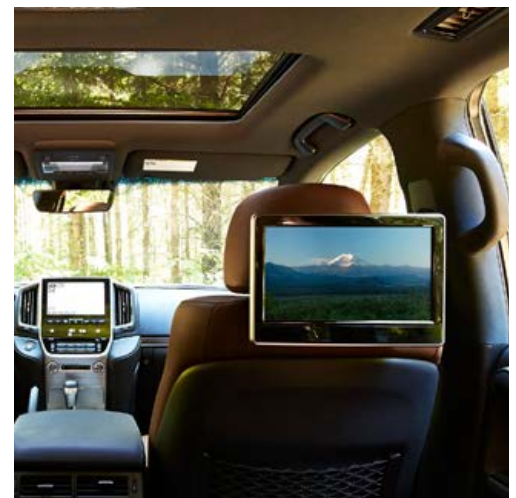
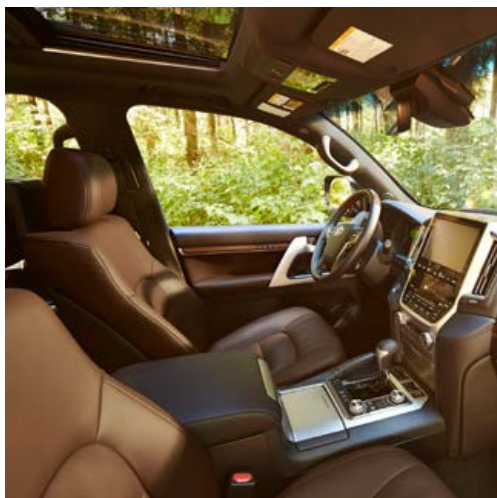
Expeditions often require the assistance of an entire crew. Fortunately, Land Cruiser's spacious cabin offers seating for up to eight. And everyone can ride in comfort, thanks to multi-stage heated and ventilated front seats, a multi-stage heated 40/20/40 split second-row seat with center armrest, and an available 50/50 split third-row seat.

### Rear-seat DVD entertainment system

Rear-seat passengers can personalize their entertainment options with the available rear-seat DVD entertainment system.<sup>4</sup> The latest movies, video games and more can be enjoyed on the two 11.6-in. screens placed behind the driver and front passenger seats. So no matter where your expedition takes you, the comforts of home can come along for the ride.

### Moonroof

Let's open up to the world. Land Cruiser's power moonroof lets you enjoy everything from a cool breeze to a breathtaking view of the night sky.



PERFORMANCE

# Tame every terrain.

Land Cruiser has earned a loyal following from around the world. And its loyalty is well earned thanks to its off-road<sup>1</sup> performance enabled by sophisticated technologies. With over six decades of know-how, Land Cruiser is more than ready to raise the bar on every adventure.



## Suspension

Land Cruiser rides on an independent double-wishbone suspension with coil springs and stabilizer bar up front, and a 4-link rear suspension with coil springs, stabilizer bar and semi-floating axle in the rear. It's a proven system that has stood the test of time.

Off-roading is inherently dangerous. Abusive use may result in bodily harm or vehicle damage. Wear seatbelts at all times and do not allow passengers in cargo area.



Heritage Edition shown in Midnight Black Metallic. Center left: Land Cruiser shown in Midnight Black Metallic. Bottom right: Heritage Edition shown in Blizzard Pearl.

## 5.7L V8

With power comes confidence. Land Cruiser's Double Overhead Cam (DOHC) 32-valve V8 develops 381 horsepower and 401 lb.-ft. of torque, but that's only part of the story. Technologies such as Dual Independent Variable Valve Timing with intelligence (VVT-i) and an Acoustic Control Induction System (ACIS) help maximize usable power throughout the rpm range.



## Skid plates

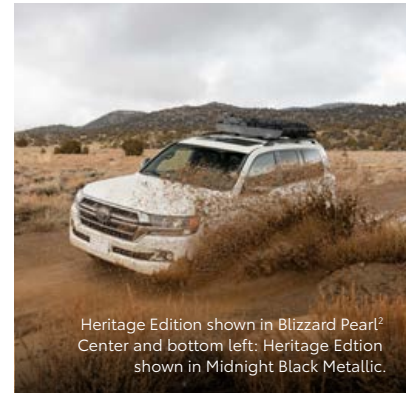
Land Cruiser's undercarriage is equipped with reinforced skid plates to protect crucial areas like the front suspension, radiator, fuel tank and transfer case.



# Go to where simple SUVs simply can't.



Many SUVs claim off-road prowess, but few can actually deliver when you need it most. So when you have serious terrain to conquer, Land Cruiser's impressive off-road capabilities help you prevail!



Heritage Edition shown in Blizzard Pearl<sup>2</sup>  
Center and bottom left: Heritage Edition shown in Midnight Black Metallic.

## Multi-Terrain Select

Multi-Terrain Select (MTS) is an innovative system that helps control wheelspin and brake lockup to optimize driving performance over five of the most common off-road surfaces: Rock, Rock & Dirt, Mogul, Loose Rock and Mud & Sand.

## Multi-Terrain Monitor

Multi-Terrain Monitor (MTM)<sup>7</sup> helps you check your immediate surroundings for potential trouble. Simply press a button to display front, rear and side camera views on the 9-in. navigation screen.



## Torsen<sup>®</sup> limited-slip differential

Land Cruiser's Torsen<sup>®8</sup> limited-slip center differential is engineered to automatically send more power to the wheel or axle with the most traction, and is equipped with a locking feature so you can manually select 50/50 front/rear power distribution in extremely traction-limited situations.

Off-roading is inherently dangerous. Abusive use may result in bodily harm or vehicle damage. Wear seatbelts at all times and do not allow passengers in cargo area.

## Crawl Control with Off-road Turn Assist

Crawl Control (CRAWL)<sup>9</sup> is an advanced system that automatically modulates the throttle and brakes on five low-speed settings. Off-road Turn Assist<sup>1</sup> allows for a tighter turning radius in Crawl Control mode in order to navigate turns when off-road.

## Kinetic Dynamic Suspension System

The Kinetic Dynamic Suspension System (KDSS) helps keep optimal traction, no matter how uneven the terrain is. When activated, KDSS automatically disconnects the sway bar and adjusts the suspension system for better wheel articulation.

# Amplify your drive.

Take advantage of smarter and convenient technologies designed to simplify your everyday life. From a suite of services that are there for you 24/7 to an immersive audio multimedia system, you can stay connected to your world.



## Connected Services<sup>10</sup>

When the unexpected occurs, Safety Connect<sup>®11</sup> is ready to help. Drivers can be connected to our response center at the touch of a button. You can get Roadside Assistance,<sup>12</sup> and in case of an accident or emergency, an agent can notify local emergency services to request dispatch to the vehicle's location.

To view included trial details, please visit [toyota.com/connected-services](http://toyota.com/connected-services).



Heritage Edition shown in Midnight Black Metallic.  
Bottom: Heritage Edition interior shown in Black leather trim.

## Audio Multimedia

Make every drive more personal. By utilizing your Land Cruiser's audio multimedia capabilities, you'll always have access to what you want. Whether it's listening to your favorite playlist or finding the most scenic route to your destination, you'll enjoy the convenience of connectivity.



## SiriusXM<sup>®</sup> All Access 3-month trial subscription

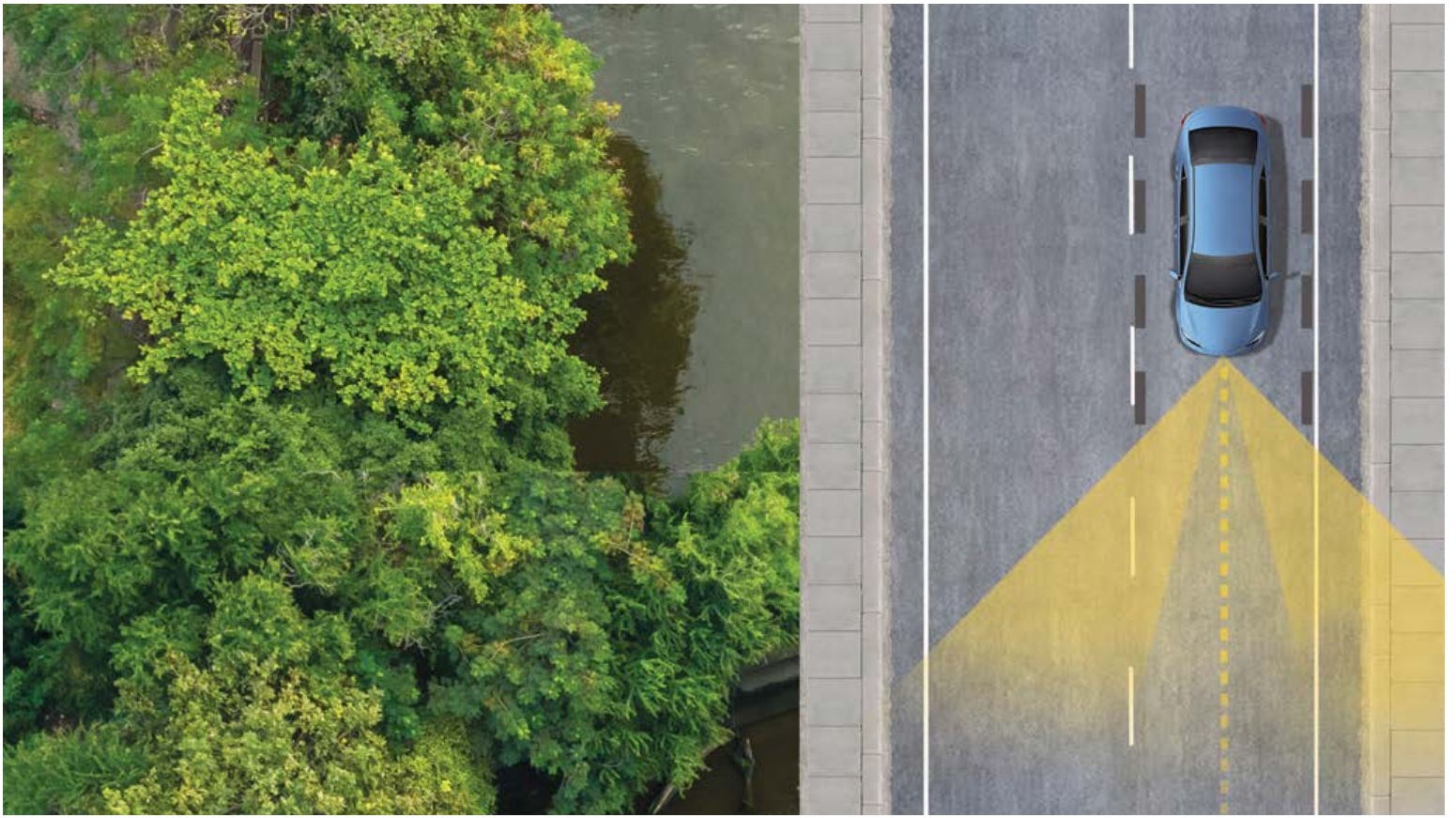
Enjoy listening to what you want to hear. With SiriusXM,<sup>®13</sup> you get the deepest variety of ad-free music, more sports coverage than anywhere else, exclusive talk channels, every kind of comedy, and the most complete news coverage.<sup>14</sup>



## JBL<sup>®</sup>

Feel the difference and hear the truth. Designed specifically for Toyota, JBL<sup>®15</sup> finely tunes each speaker to the interior of the vehicle. Just turn up the volume to hear the crisp, rich, vibrant sound come through.





*TOYOTA SAFETY SENSE™ P (TSS-P)*

# Peace of mind comes standard.

Toyota Safety Sense™ P (TSS-P)<sup>16</sup> is a bundle of active safety features included on many new Toyota vehicles at no additional cost. TSS-P's comprehensive features create in-the-moment safety designed to help protect you and your passengers from harm.



Pre-Collision System with Pedestrian Detection<sup>17</sup>



Dynamic Radar Cruise Control<sup>18</sup>



Lane Departure Alert<sup>19</sup>



Automatic High Beams<sup>20</sup>

## LAND CRUISER COLORS & TRIMS



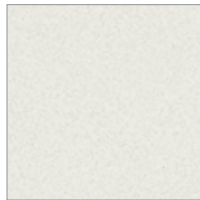
Midnight Black Metallic



Magnetic Gray Metallic

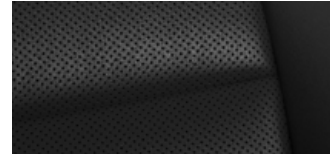


Classic Silver Metallic



Blizzard Pearl<sup>2</sup>

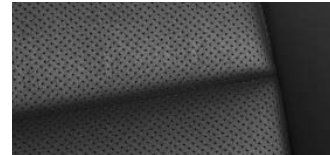
Black semi-aniline perforated leather trim



Terra semi-aniline perforated leather trim



Heritage Edition perforated leather with bronze-colored stitching



## LAND CRUISER WHEELS



18-in. alloy wheel



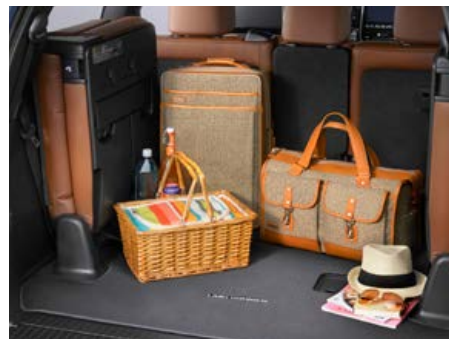
Heritage Edition  
18-in Bronze-colored BBS<sup>®3</sup> forged  
aluminum alloy wheel

## LAND CRUISER ACCESSORIES

This is a great way to add extra personality to your Land Cruiser. Not every accessory is available in your area, so for a complete list of accessories, go to [toyota.com/landcruiser/accessories](https://toyota.com/landcruiser/accessories).



All-weather floor mats<sup>21</sup>



Cargo mat<sup>5</sup>



## LAND CRUISER MODELS



### Land Cruiser

Includes these key features

#### Mechanical/Performance

- ✓ 5.7L V8 with 381 hp
- ✓ 8-speed Electronically Controlled automatic Transmission
- ✓ Full-time 4WD with Active Traction Control (A-TRAC)
- ✓ Torsen<sup>®8</sup> limited-slip differential with locking feature
- ✓ Multi-Terrain Select (MTS)
- ✓ Crawl Control (CRAWL)<sup>9</sup>
- ✓ Off-road Turn Assist (OTA)<sup>1</sup>
- ✓ Kinetic Dynamic Suspension System (KDSS)
- ✓ Towing capacity<sup>22</sup> — 8100 lbs.
- ✓ Forging depth — 27.55 in.
- ✓ Angle of approach/departure — 32/24 degrees
- ✓ 13 city/17 highway/14 combined EPA-est. mpg<sup>23</sup>

#### Exterior Features

- ✓ Projector-beam LED low-/high-beam headlights
- ✓ 18-in. split-spoke alloy wheels
- ✓ Skid plates on front suspension, radiator, fuel tank and transfer case
- ✓ Bird's Eye View Camera<sup>24</sup>
- ✓ Running boards
- ✓ Chrome side body molding

#### Interior Features

- ✓ Seating for eight
- ✓ Four-zone automatic climate control
- ✓ Semi-aniline perforated leather-trimmed seating surfaces
  - Multi-stage heated and ventilated front seats
  - 40/20/40 split, sliding, reclining, folding, tumble second-row seats
  - Multi-stage heated second-row seat
  - 50/50 split fold-down third-row seat
- ✓ Center console with cooler box
- ✓ Smart Key System<sup>25</sup> with Push Button Start

#### Audio Multimedia

- ✓ Premium Audio includes:
  - 9-in. touchscreen with split-screen display and 14 JBL<sup>®15</sup> speakers including subwoofer and amplifier
  - Integrated Navigation<sup>26</sup>
  - SiriusXM<sup>®13</sup> with 3-month All Access trial subscription<sup>14</sup>
- ✓ Connected Services<sup>10</sup> with Safety Connect<sup>®11</sup> trial<sup>45</sup>

#### Option

- ✓ Rear-seat DVD entertainment system<sup>4</sup> with two individual 11.6-in. display screens



### Heritage Edition

Adds to or replaces features offered on Land Cruiser

#### Mechanical/Performance

- ✓ 5.7L V8 with 381 hp
- ✓ 8-speed Electronically Controlled automatic Transmission
- ✓ Full-time 4WD with Active Traction Control (A-TRAC)
- ✓ Torsen<sup>®8</sup> limited-slip differential with locking feature
- ✓ Multi-Terrain Select (MTS)
- ✓ Crawl Control (CRAWL)<sup>9</sup>
- ✓ Off-road Turn Assist (OTA)<sup>1</sup>
- ✓ Kinetic Dynamic Suspension System (KDSS)
- ✓ Towing capacity<sup>22</sup> — 8100 lbs.
- ✓ Forging depth — 27.55 in.
- ✓ Angle of approach/departure — 32/24 degrees
- ✓ 13 city/17 highway/14 combined EPA-est. mpg<sup>23</sup>

#### Exterior Features

- ✓ Projector-beam LED low-/high-beam headlights with dark housing
- ✓ Heritage Edition grille with black inserts and darkened chrome-finished surround
- ✓ 18-in. Bronze-colored BBS<sup>®3</sup> forged-aluminum alloy wheels
- ✓ Skid plates on front suspension, radiator, fuel tank and transfer case
- ✓ Bird's Eye View Camera<sup>24</sup>
- ✓ "TOYOTA Land Cruiser" heritage badge
- ✓ Yakima<sup>®</sup> MegaWarrior cargo basket

#### Interior Features

- ✓ Seating for five
- ✓ Four-zone automatic climate control
- ✓ Black interior package including:
  - Black headliner
  - Bronze-colored contrast stitching on seats, steering wheel, center stack, console box and door panels
- ✓ Black perforated leather-trimmed seating surfaces
  - Multi-stage heated and ventilated front seats
  - 40/20/40 split, sliding, reclining, folding, tumble second-row seats
  - Multi-stage heated second-row seat
  - Available 50/50 split fold-down third-row seat
- ✓ Smart Key System<sup>25</sup> with Push Button Start

#### Audio Multimedia

- ✓ Premium Audio includes:
  - 9-in. touchscreen with split-screen display and 14 JBL<sup>®15</sup> speakers including subwoofer and amplifier
  - Integrated Navigation<sup>26</sup>
  - SiriusXM<sup>®13</sup> with 3-month All Access trial subscription<sup>14</sup>
- ✓ Connected Services<sup>10</sup> with Safety Connect<sup>®11</sup> trial<sup>45</sup>

#### Option

- ✓ Black perforated leather-trimmed third-row seating (increases passenger capacity to eight)

## LAND CRUISER FEATURES<sup>27</sup>

S = Standard O = Optional P = Available Package

### Exterior

Land Cruiser

Heritage Edition

LED projector-beam low- and high-beam headlights with auto level control and auto on/off feature, headlight cleaners and integrated Land Cruiser logo	S	
LED projector-beam low- and high-beam headlights with dark housing, auto level control and auto on/off feature, headlight cleaners and integrated Land Cruiser logo		S
Headlight-integrated LED Daytime Running Lights (DRL)	S	S
Integrated LED fog lights with chrome-finished surround	S	
Integrated LED fog lights with darkened chrome-finished surround		S
Heritage Edition grille with black inserts and darkened chrome-finished surround		S
Chrome grille surround with dark silver inserts and chrome accent	S	
Black-with-darkened-chrome heated power auto-dimming outside mirrors with cameras; <sup>2</sup> turn signal indicators, vortex generators and automatic power-folding, reverse tilt-down, and memory features		S
Color-keyed heated power auto-dimming outside mirrors with cameras; <sup>28</sup> turn signal indicators, vortex generators and automatic power-folding, reverse tilt-down, and memory features	S	
LED stop lights and light-pipe taillights with vortex generators	S	S
Side-body chrome moldings with Land Cruiser logo	S	
Power open/close rear-door liftgate (with key remote)	S	S
Power tilt/slide moonroof with sunshade and one-touch open/close with jam protection	S	S
"TOYOTA Land Cruiser" heritage badge		S
18-in. split-spoke alloy wheels with P285/60R18 116V tires	S	
18-in. Bronze-colored BBS <sup>®3</sup> forged-aluminum alloy wheels with P285/60R18 116V tires		S
Rain-sensing aerodynamic variable intermittent windshield wipers and intermittent rear wiper	S	S
Windshield wiper de-icer	S	S
Privacy glass on rear side, quarter and liftgate windows	S	S
Color-keyed rear spoiler	S	S
Roof rack	S	
Yakima <sup>®</sup> MegaWarrior cargo basket		S
Aluminum running boards	S	
Front and rear frame-mounted tow hooks <sup>22</sup>	S	S
Front and rear heavy-duty mudguards	S	S
Skid plates — on front suspension, radiator, fuel tank and transfer case	S	S

### Interior

Four-zone automatic front and rear climate control with air filter, dust and pollen filtration mode, push-button controls, separate second-row control panel and individual temperature settings for driver, front passenger and rear-seat passengers	S	S
Enhanced Multi-Terrain Monitor (MTM) <sup>7</sup> with selectable front, side or rear views	S	S
Bird's Eye View Camera <sup>24</sup> — Perimeter Scan, overhead 360-degree view in drive and reverse, and curb view	S	S
Rear-seat DVD entertainment system <sup>4</sup> with two individual 11.6-in. display screens, RCA jacks, HDMI input, remote and two wireless headphones <sup>29</sup>	O	
Qi-compatible wireless smartphone and device charging <sup>30</sup> with full-charge indicator light (located at the bottom of the dashboard center stack)	S	S
8-passenger seating with semi-aniline perforated leather-trimmed seating surfaces in Black or available (no-cost) Terra	S	
5-passenger seating with black perforated leather-trimmed seating and cargo tonneau cover		S
8-passenger seating with black perforated leather-trimmed seating		O
Black interior package with black headliner and bronze-colored contrast stitching on seats, steering wheel, center stack, console box and door panels		S
Multi-stage heated and ventilated front seats with seatback pockets; 10-way power-adjustable driver's seat with three-position memory function and power lumbar support	S	S
40/20/40 split, sliding, reclining, folding, tumble and multi-stage heated second-row seat with center armrest and abrasion-resistant seatback material	S	S
50/50 split, fold-down third-row seat with folding headrests and abrasion-resistant seatback material	S	O
Dynamic Radar Cruise Control (DRCC) <sup>18</sup>	S	S
Leather-trimmed heated power tilt/telescopic steering wheel with wood-grain-style accents and audio, Siri <sup>®</sup> Eyes Free, <sup>31</sup> Multi-Information Display (MID), Bluetooth <sup>®6</sup> hands-free phone, voice-command, Toyota Safety Sense™ P (TSS-P) <sup>16</sup> and Dynamic Radar Cruise Control (DRCC) <sup>18</sup> toggle	S	S
Leather-trimmed shift lever	S	S



Interior (continued)

Land Cruiser

Heritage Edition

Optitron instrumentation with turquoise-illuminated edges and white-backlit speedometer, tachometer, voltmeter, coolant temperature, fuel and engine oil pressure gauges; TFT Multi-Information Display (MID) with odometer, tripmeter, speedometer, shift position, current and average fuel economy, distance to empty, average speed, parking assist; <sup>32</sup> steering wheel angle, ECO Driving Indicator zone display, Multi-Terrain Select (MTS) including Crawl Control (CRAWL) <sup>9</sup> with Off-road Turn Assist (OTA); TPMS <sup>43</sup> with individual tire location including spare, Dynamic Radar Cruise Control (DRCC) <sup>18</sup> adjustment information, TSS-P Pre-Collision System (PCS) <sup>17</sup> warning alarm adjustment, Lane Departure Alert (LDA), <sup>19</sup> maintenance information and warning messages	S	S
Smart Key System <sup>25</sup> on all doors and liftgate with remote keyless entry system, remote illuminated entry and Push Button Start	S	S
Power windows with one-touch auto up/down with jam protection in all positions	S	S
Power door locks with shift-linked automatic lock/unlock feature	S	S
Auto-dimming rearview mirror with compass and HomeLink <sup>®33</sup> universal transceiver	S	S
LED accent lighting illuminating from the front- and rear-door upper trim	S	S
Overhead console with maplights, sunglasses storage and Safety Connect <sup>®11</sup> controls	S	S
Bi-level covered center console with cooler box and second-row vents	S	
Bi-level covered center console with second-row vents		S
Two center console-area 12V auxiliary power outlets, <sup>34</sup> and one rear cargo area 120V AC power outlet <sup>35</sup>	S	S
Front- and rear-door storage pockets	S	S
Twelve cup and bottle holders	S	
Ten cup and bottle holders		S
Dual extendable sun visors with illuminated vanity mirrors and secondary visors	S	S
All-weather floor and cargo mats <sup>5</sup>		S

Audio Multimedia

Premium Audio with Integrated Navigation <sup>26</sup> — includes 9-in. touchscreen with split-screen display, AM/FM cache radio, CD player, 14 JBL <sup>®15</sup> speakers including subwoofer and amplifier, USB port, <sup>36</sup> hands-free phone capability and music streaming <sup>6</sup> via Bluetooth <sup>®6</sup> wireless technology, Siri <sup>®</sup> Eyes Free, <sup>31</sup> HD Radio <sup>™37</sup> Predictive Traffic and Doppler Weather overlay, and SiriusXM <sup>®13</sup> with 3-month All Access trial subscription. <sup>14</sup> See <a href="http://toyota.com/audio-multimedia">toyota.com/audio-multimedia</a> for details.	S	S
---	---	---

Safety and Convenience

Toyota Safety Sense™ P (TSS-P) <sup>16</sup> — Pre-Collision System with Pedestrian Detection (PCS w/PD) <sup>17</sup> Lane Departure Alert (LDA), <sup>19</sup> Automatic High Beams (AHB) <sup>20</sup> and Dynamic Radar Cruise Control (DRCC) <sup>18</sup>	S	S
Star Safety System™ — includes Vehicle Stability Control (VSC) <sup>38</sup> Active Traction Control (A-TRAC), Multi-Terrain 4-wheel Anti-lock Brake System (ABS), Electronic Brake-force Distribution (EBD), Brake Assist (BA) <sup>39</sup> and Smart Stop Technology <sup>®</sup> (SST) <sup>40</sup> At speeds greater than five miles per hour, when the accelerator is depressed first and the brakes are then applied firmly for longer than one-half second, Smart Stop Technology <sup>®40</sup> is designed to help the driver bring the vehicle to a stop.	S	S
Ten airbag <sup>41</sup> — includes driver and front passenger Advanced Airbag System, driver and front passenger seat-mounted side airbags, second-row outboard seat-mounted side airbags, driver and front passenger knee airbags, and all-row Roll-sensing Side Curtain Airbags (RSCA)	S	S
Driver and front passenger active headrests <sup>42</sup>	S	S
Driver and front passenger Active Seatbelt Pretensioning System with force limiters	S	S
3-point seatbelts for all seating positions; driver-side Emergency Locking Retractor (ELR) and Automatic/Emergency Locking Retractor (ALR/ELR) on all passenger belts	S	S
Adjustable front- and second-row outboard seatbelt anchors	S	S
LATCH (Lower Anchors and Tethers for Children) includes lower anchors on outboard second-row seats and tether anchors on all second-row seats	S	S
Child-protector rear door locks and power window lockout control	S	S
Head-impact protection structure with energy-absorbing soft upper interior trim	S	S
Highly rigid body structure with side-impact door beams	S	S
Tire Pressure Monitor System (TPMS) <sup>43</sup> with direct pressure readout and individual tire location alert	S	S
Safety Connect <sup>®11</sup> trial <sup>45</sup> — includes Emergency Assistance, Stolen Vehicle Locator, <sup>44</sup> Roadside Assistance <sup>12</sup> and Automatic Collision Notification; available by subscription; complimentary one-year trial subscription. <sup>45</sup>	S	S
Front and rear parking assist sonar <sup>32</sup>	S	S
Blind Spot Monitor (BSM) <sup>46</sup> with Rear Cross-Traffic Alert (RCTA) <sup>47</sup>	S	S
Hill Start Assist Control (HAC) <sup>48</sup>	S	S
Anti-theft system with engine immobilizer <sup>49</sup>	S	S
Multi-Terrain Select (MTS) and Crawl Control (CRAWL) <sup>9</sup> with Off-road Turn Assist (OTA) <sup>1</sup>	S	S
Integrated backup camera <sup>28</sup> display with projected path	S	S
ToyotaCare <sup>50</sup> featuring a no cost maintenance plan with Roadside Assistance <sup>50</sup>	S	S

Options

Rear-seat DVD entertainment system <sup>1</sup> with two individual 11.6-in. display screens, RCA jacks, HDMI input, remote and two wireless headphones <sup>29</sup>	O	
8-passenger seating with black perforated leather-trimmed seating		O

# LAND CRUISER SPECIFICATIONS

S = Standard O = Optional P = Available Package

## Mechanical

	Land Cruiser	Heritage Edition
<b>ENGINE</b>		
5.7-Liter DOHC 32-Valve V8 with Dual Independent Variable Valve Timing with intelligence (VVT-i); 381 hp @ 5600 rpm; 401 lb.-ft. @ 3600 rpm	S	S
<b>IGNITION SYSTEM</b>		
Electronic, with Toyota Direct Ignition (TDI)	S	S
<b>EMISSION RATING</b>		
Ultra Low Emission Vehicle II (BIN 125)	S	S
<b>TRANSMISSION</b>		
8-speed Electronically Controlled automatic Transmission with intelligence (ECT-i); sequential shift mode and uphill/downhill shift logic	S	S
<b>DRIVETRAIN</b>		
Full-time 4WD system with Active Traction Control (A-TRAC) and Torsen® limited-slip center differential with locking feature	S	S
<b>BODY CONSTRUCTION</b>		
Unitized steel body on 10-member high-tensile-steel ladder frame	S	S

## Suspension

Independent double-wishbone front suspension with coil springs and stabilizer bar; 4-link rear suspension with coil springs, stabilizer bar and semi-floating axle	S	S
Kinetic Dynamic Suspension System (KDSS)	S	S
<b>STEERING</b>		
Vehicle speed-sensing, variable gear ratio, power-assisted rack-and-pinion	S	S
Turning circle diameter, curb to curb (ft.)	38.7	38.7
<b>BRAKES</b>		
Power-assisted rear ventilated disc brakes with hydraulic brake booster and Star Safety System™	S	S
Front disc brake rotor diameter (in.)	13.97	13.97
Rear disc brake rotor diameter (in.)	13.58	13.58

## Dimensions

<b>EXTERIOR (in.)</b>		
Overall height	74.0	81.6*
Overall width	77.95	77.95
Overall length	194.9	194.9
Wheelbase	112.2	112.2
Track (front/rear)	65.0/64.8	64.6/64.4
<b>INTERIOR (front/rear) (in.)</b>		
Head room	38.3/38.9/35.8	38.3/38.9/35.8
Shoulder room	61.0/61.1/62.3	61.0/61.1/62.3
Hip room	59.4/58.6/56.6	59.4/58.6/56.6
Leg room	42.9/34.4/28.3	42.9/34.4/28.3
<b>OFF-HIGHWAY</b>		
Angle of approach/departure/breakover (degrees)	32/24/21	32/24/21
Ground clearance (in.)	8.9	8.9
5-Speed Crawl Control (CRAWL) <sup>9</sup> with Off-road Turn Assist (OTA) <sup>1</sup>	S	S
Multi-Terrain Select (MTS)	S	S
<b>RATIOS</b>		
	LAND CRUISER	HERITAGE EDITION
Rear axle	3.307	3.307
Transfer case (high/low)	1.000:1/2.618:1	1.000:1/2.618:1

## Weights and Capacities

Curb weight (lb.)	5815	5715
Gross Vehicle Weight Rating (GVWR) (lb.)	7385	7385
Cargo volume (cu. ft.) <sup>2</sup> behind front/second-row/third-row seats	82.8/41.4/16.1	82.8/53.5/-
Fuel tank (gal.)	24.6	24.6
Seating capacity	8	5

\*Includes Yakima® MegaWarrior cargo basket.

See numbered footnotes in Disclosures section.



## LAND CRUISER SPECIFICATIONS

S = Standard O = Optional P = Available Package

### Mechanical (continued)

	Land Cruiser	Heritage Edition
<b>TOWING</b>		
Integrated towing hitch receiver and wiring harness with 4-/7-pin connectors <sup>22</sup>	S	S
Towing capacity <sup>22</sup>	8100	8100
<b>TIRES</b>		
Mud-and-Snow-rated steel-belted radials	S	S
Full-size on alloy wheel, mounted under body	S	S
<b>WHEELS</b>		
18-in. split-spoke alloy wheels	S	
18-in. Bronze-colored BBS <sup>®3</sup> forged-aluminum alloy wheels		S
<b>Mileage Estimates (mpg city/highway/combined)<sup>23</sup></b>		
CVTi-S	13/17/14	13/17/14

## DISCLOSURES

1. The Toyota Land Cruiser is designed to meet most off-road driving requirements, but off-roading is inherently dangerous and may result in vehicle damage. Toyota encourages responsible operation to help protect you, your vehicle and the environment. Seatbelts should be worn at all times. Do not allow passengers to ride in cargo area. 2. Extra-cost color. 3. BBS® is a registered trademark of BBS of America, Inc. 4. A single-disc DVD player is included. A separate DVD player or game system utilizing the center console's video/audio inputs is required in order to use the split screen function of the Dual View system. 5. Cargo and load capacity limited by weight and distribution. Always properly secure cargo and cargo area. 6. The Bluetooth® word mark and logos are registered trademarks owned by Bluetooth SIG, Inc., and any use of such marks by Toyota is under license. A compatible Bluetooth®-enabled phone must first be paired. Phone performance depends on software, coverage and carrier. 7. The Multi-Terrain Monitor view is limited and can be affected by environmental conditions. See *Owner's Manual* for additional limitations and details. 8. Torsen® is a registered trademark of Zexel Torsen, Inc. 9. Crawl Control is designed for driving on difficult terrain at low speeds and assists the driver by controlling acceleration and braking, allowing the driver to focus on steering. See *Owner's Manual* for additional limitations and details. 10. Connected Services depends on an operative telematics device, a cellular connection, navigation map data, GPS signal strength and other factors outside of Toyota's control, all of which can limit system functionality or availability, including access to response center and emergency support. Service may vary by vehicle and region. Subscription required after trial. Terms of Use apply. Data charges may apply. Apps and services subject to change at any time without notice. See [toyota.com/connected-services](http://toyota.com/connected-services) for details. To learn about Toyota's data collection, use, sharing and retention practices, please visit <https://www.toyota.com/privacvts/>. Stolen vehicle police report required to use Stolen Vehicle Locator. 11. Safety Connect® depends on an operative telematics device, a cellular connection, GPS signal strength and other factors outside of Toyota's control, all of which can limit system functionality or availability, including access to response center and emergency support. Stolen vehicle police report required to use Stolen Vehicle Locator. Some features may require the Toyota app. Registration required. Subscription required after trial. Service subject to change at any time without notice. Terms of Use apply. Data charges may apply. Service may vary by vehicle and region. See usage precautions and service limitations in *Owner's Manual* and at [toyota.com/connected-services/](http://toyota.com/connected-services/) for additional details. To learn about Toyota's data collection, use, sharing and retention practices, please visit <https://www.toyota.com/privacvts/>. 12. Requires adequate cellular coverage and GPS signal strength. May not work in all areas. Service may vary by vehicle and region. See Toyota Dealer for details and exclusions. 13. SiriusXM® audio services require a subscription sold separately by Sirius XM Radio Inc. If you decide to continue service after your trial, the subscription plan you choose will automatically renew thereafter and you will be charged according to your chosen payment method at then-current rates. Fees and taxes apply. To cancel, you must call SiriusXM at 1-866-635-2349. See SiriusXM Customer Agreement for complete terms at [www.siriusxm.com](http://www.siriusxm.com). All fees and programming subject to change. Not all vehicles or devices are capable of receiving all services offered by SiriusXM. Current information and features may not be available in all locations, or on all receivers. ©2020 Sirius XM Radio Inc. SiriusXM and all related marks and logos are trademarks of Sirius XM Radio Inc. 14. SiriusXM All Access trial length and service availability may vary by model, model year or trim. 15. JBL® is a registered trademark of Harman International Industries, Inc. 16. Toyota Safety Sense™ effectiveness is dependent on many factors including road, weather and vehicle conditions. Drivers are responsible for their own safe driving. Always pay attention to your surroundings and drive safely. See *Owner's Manual* for additional limitations and details. 17. The Pre-Collision System (PCS) with Pedestrian Detection (PD) is designed to determine if impact is imminent and help reduce impact speed and damage in certain frontal collisions involving a vehicle or a pedestrian. PCS w/PD is not a substitute for safe and attentive driving. System effectiveness depends on many factors, such as speed, size and position of pedestrian and weather, light and road conditions. See *Owner's Manual* for additional limitations and details. 18. Dynamic Radar Cruise Control (DRCC) is designed to assist the driver and is not a substitute for safe and attentive driving practices. System effectiveness is dependent on many factors including road, weather and traffic conditions. Vehicles with manual transmission have regular DRCC. See *Owner's Manual* for additional limitations and details. 19. Lane Departure Alert is designed to read visible lane markers under certain conditions, and provide visual and audible alerts when lane departure is detected. It is not a collision-avoidance system or a substitute for safe and attentive driving. Effectiveness is dependent on many factors including road, weather and vehicle conditions. See *Owner's Manual* for additional limitations and details. 20. Automatic High Beams operate at speeds above 25 mph. Factors such as a dirty windshield, weather, lighting and terrain limit effectiveness, requiring the driver to manually operate the high beams. See *Owner's Manual* for additional limitations and details. 21. This floor mat/floor liner was designed specifically for use in your model and model year vehicle and SHOULD NOT be used in any other vehicle. To avoid potential interference with pedal operation, each mat/liner must be secured with its fasteners. Do not install a floor mat/floor liner on top of an existing floor mat/floor liner. 22. Before towing, confirm your vehicle and trailer are compatible, hooked up and loaded properly and that you have any necessary additional equipment. Do not exceed any Weight Ratings and follow all instructions in your *Owner's Manual*. The maximum you can tow depends on base curb weight plus the total weight of any cargo, occupants, and added vehicle equipment. "Added vehicle equipment" includes additional standard/optional equipment and accessories added by the manufacturer, dealers, and/or vehicle owners. The only way to be certain of your vehicle's exact curb weight is to weigh your vehicle without passengers or cargo. [Calculated with the new SAE J2807 method.] Installation of a tow hitch receiver or other accessories located near the rear bumper or side-door kick sensors may require disabling or removing the kick sensor, and the sensor operation setting in your vehicle should be turned off. See *Owner's Manual* for limitations. 23. EPA-estimated 13 city/17 highway/14 combined mpg rating for 2021 Land Cruiser. Use for comparison purposes only. Your mileage will vary for many reasons, including your vehicle's condition and how/where you drive. See [www.fueleconomy.gov](http://www.fueleconomy.gov). 24. The Bird's Eye View Camera does not provide a comprehensive view of the area surrounding the vehicle and you should also look around the vehicle, using mirrors to confirm surrounding clearance. Environmental conditions may limit effectiveness and view may become obscured. See *Owner's Manual* for additional limitations and details. 25. The Smart Key System may interfere with some pacemakers or cardiac defibrillators. If you have one of these medical devices, please talk to your doctor to see if you should deactivate this system. 26. Be sure to obey traffic regulations and maintain awareness of road and traffic conditions at all times. Functionality, availability and accuracy of information provided by the system depends on many factors and service may not be available in every location. Use common sense when relying on information provided. Apps/services vary by phone/carrier. Select apps use large amounts of data; you are responsible for charges. Apps and services subject to change at any time without notice. See [toyota.com/connected-services](http://toyota.com/connected-services) for details. Services and programming subject to change. Updates may be available from your dealer at an additional cost. See *Owner's Manual* for additional limitations and details. 27. Toyota strives to build vehicles to match customer interest and thus they typically are built with popular options and option packages. Not all options/packages are available separately and some may not be available in all regions of the country. See [toyota.com](http://toyota.com) for information about options/packages commonly available in your area. If you would prefer a vehicle without any or with different options, contact your dealer to check for current availability or the possibility of placing a special order. Color(s) depicted may vary based on multiple factors, including ambient lighting and the format in which it is being viewed (e.g., computer, mobile device or print). 28. The backup camera does not provide a comprehensive view of the rear area of the vehicle and you should also look around the vehicle, using mirrors to confirm rearward clearance. Environmental conditions may limit effectiveness and view may become obscured. See *Owner's Manual* for additional limitations and details. 29. Headphones are for passenger use only. 30. Qi wireless charging may not be compatible with all mobile phones, MP3/WMA players and like models. When using the wireless charging system, avoid placing metal objects between the wireless charger and the mobile device when charging is active. Doing so may cause metal objects to become hot and could cause burns. 31. Always focus on the road while driving. Siri® is available on select iPhone®/iPad® models and requires Internet access. Siri® is not available in all languages or all areas and features vary by area. Some Siri® functionality and commands are not accessible in the vehicle. See [apple.com](http://apple.com) and phone carrier for details. Data charges may apply. Siri® is a registered trademark of Apple Inc. 32. Front and rear parking assist sonar is designed to warn drivers of potential front and rear collisions at speeds of 6 mph or less. Certain vehicle and environmental factors, including an object's shape and composition, may affect the ability of the front and rear parking assist sonar to detect it. Always look around outside the vehicle and use mirrors to confirm clearance. See *Owner's Manual* for additional limitations and details. 33. HomeLink® and the HomeLink® house icon are registered trademarks of Gentex Corporation. 34. Rated for 12 volts. See *Owner's Manual* for additional limitations and details. 35. Do not exceed 120V. See *Owner's Manual* for additional limitations and details. 36. May not be compatible with all mobile phones, MP3/WMA players and like models. 37. HD Radio™ Technology manufactured under license from iBiquity Digital Corporation U.S. and Foreign Patents. HD Radio™ and the HD, HD Radio, and "Arc" logos are proprietary trademarks of iBiquity Digital Corp. 38. Vehicle Stability Control is an electronic system designed to help the driver maintain vehicle control under adverse conditions. It is not a substitute for safe and attentive driving practices. Factors including speed, road conditions, weather and driver steering input can all affect whether VSC will be effective in preventing a loss of control. See *Owner's Manual* for additional limitations and details. 39. Brake Assist is designed to help the driver take advantage of ABS and is not a substitute for safe driving practices. Braking effectiveness also depends on proper vehicle maintenance, tire and road conditions. See *Owner's Manual* for additional limitations and details. 40. Smart Stop Technology® operates only in the event of certain contemporaneous brake and accelerator pedal applications. When engaged, the system will reduce power to help the brakes bring the vehicle to a stop. Factors including speed, road conditions and driver input can all impact stopping distance. Smart Stop Technology® is not a substitute for safe and attentive driving and does not guarantee instant stopping. See *Owner's Manual* for additional limitations and details. 41. Airbag systems are Supplemental Restraint Systems and are designed to inflate only under certain conditions and in certain types of severe collisions. To decrease the risk of injury from an inflating airbag, always wear seatbelts and sit upright in the middle of the seat as far back as possible. Do not put objects in front of an airbag or around the seatback. Do not use a rearward-facing child seat in any front passenger seat. See *Owner's Manual* for additional limitations and details. 42. Active front headrests can help reduce the extent of whiplash in certain types of rear-end collisions. 43. The Tire Pressure Monitor System alerts the driver when tire pressure is critically low. For optimal tire wear and performance, tire pressure should be checked regularly with a gauge; do not rely solely on the monitor system. See *Owner's Manual* for additional limitations and details. 44. Building and/or parking structures may limit system effectiveness. Stolen vehicle police report required to use Stolen Vehicle Locator. For additional assistance contact the Toyota Customer Experience Center at 1-800-331-4331. 45. The Safety Connect® trial period is at no extra cost and begins on the original date of purchase or lease of a new vehicle. Paid subscription required after trial to access the service. 46. Do not rely exclusively on the Blind Spot Monitor. Always look over your shoulder and use your turn signal. There are limitations to the function, detection and range of the monitor. See *Owner's Manual* for additional limitations and details. 47. Do not rely exclusively on the Rear Cross-Traffic Alert system. Always look over your shoulder and use your mirrors to confirm rear clearance. There are limitations to the function, detection and range of the system. See *Owner's Manual* for additional limitations and details. 48. Hill Start Assist Control is designed to help minimize backward rolling on steep ascents. It is not a substitute for safe driving judgment and practices. Factors including speed, grade, surface conditions and driver input can all affect whether HAC will be effective in preventing a loss of control. See *Owner's Manual* for additional limitations and details. 49. The engine immobilizer is a state-of-the-art anti-theft system that is initiated when you insert your key into the ignition switch or bring a Smart Key fob into the vehicle. The engine will only start if the code in the transponder chip inside the key/fob matches the code in the vehicle's immobilizer. The transponder chip is embedded in the key/fob and can be costly to replace. If you lose a key or fob, your Toyota dealer can help or go to [www.aloa.org](http://www.aloa.org) to find a qualified locksmith in your area who can perform high-security key service. 50. ToyotaCare covers normal factory scheduled maintenance for two years or 25,000 miles, whichever comes first. Certain models require a different



## DISCLOSURES

maintenance schedule as described in their *Maintenance Guide*. 24-hour Roadside Assistance is also included for two years, unlimited mileage. Roadside Assistance does not include parts and fluids, except emergency fuel delivery. See Toyota dealer for details and exclusions. Valid only in the continental U.S.

Toyota strives to build vehicles to match customer interest and thus they typically are built with popular options and option packages. Not all options/packages are available separately and some may not be available in all regions of the country. See [toyota.com](http://toyota.com) for information about options/packages commonly available in your area. If you would prefer a vehicle without any or with different options, contact your dealer to check for current availability or the possibility of placing a special order.

Color(s) depicted may vary based on multiple factors, including ambient lighting and the format in which it is being viewed (e.g., computer, mobile device or print).

Some vehicles are shown with available equipment. Seatbelts should be worn at all times. For details on vehicle specifications, standard features and available equipment in your area, contact your Toyota dealer. A vehicle with particular equipment may not be available at the dealership. Ask your Toyota dealer to help locate a specifically equipped vehicle.

All information presented herein is based on data available at the time of posting, is subject to change without notice and pertains specifically to mainland U.S.A. vehicles only. Vehicles shown may be prototypes, shown using visual effects and/or shown with options. Actual models may vary.

## WARRANTIES

---

Every Toyota Car, Truck and SUV is built to exceptional standards. And that's not idle boasting. We back it up with these Limited Warranty Coverages:

**Basic:** 36 months/36,000 miles (all components other than normal wear and maintenance items).

**Powertrain:** 60 months/60,000 miles (engine, transmission/transaxle, drive system, seatbelts and airbags).

**Rust-Through:** 60 months/unlimited miles (corrosion perforation of sheet metal).

**Emissions:** Coverages vary under Federal and California regulations. Refer to applicable *Warranty and Maintenance Guide* for details.

**Accessories:** For Genuine Toyota Accessories purchased at the time of the new vehicle purchase, the Toyota Accessory Warranty coverage is in effect for 36 months/36,000 miles from the vehicle's in-service date, which is the same coverage as the Toyota New Vehicle Limited Warranty.

For Genuine Toyota Accessories purchased after the new vehicle purchase the coverage is 12 months, regardless of mileage, from the date the accessory was installed on the vehicle, or the remainder of any applicable new vehicle warranty, whichever provides greater coverage.

You may be eligible for transportation assistance if it's necessary that your vehicle be kept overnight for repairs covered under warranty. Please see your authorized Toyota dealership for further details.

For complete details about Toyota's warranties, please visit [www.toyota.com](http://www.toyota.com), refer to the applicable *Warranty and Maintenance Guide* or see your Toyota dealer.



For Toyota Mobility program details, go to [www.toyota.com/mobility](http://www.toyota.com/mobility) or call the Toyota Brand Engagement Center at 1-800-331-4331